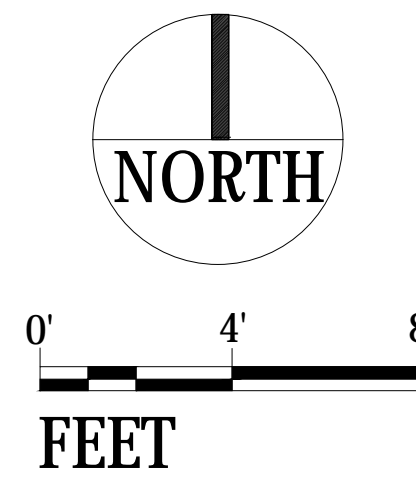
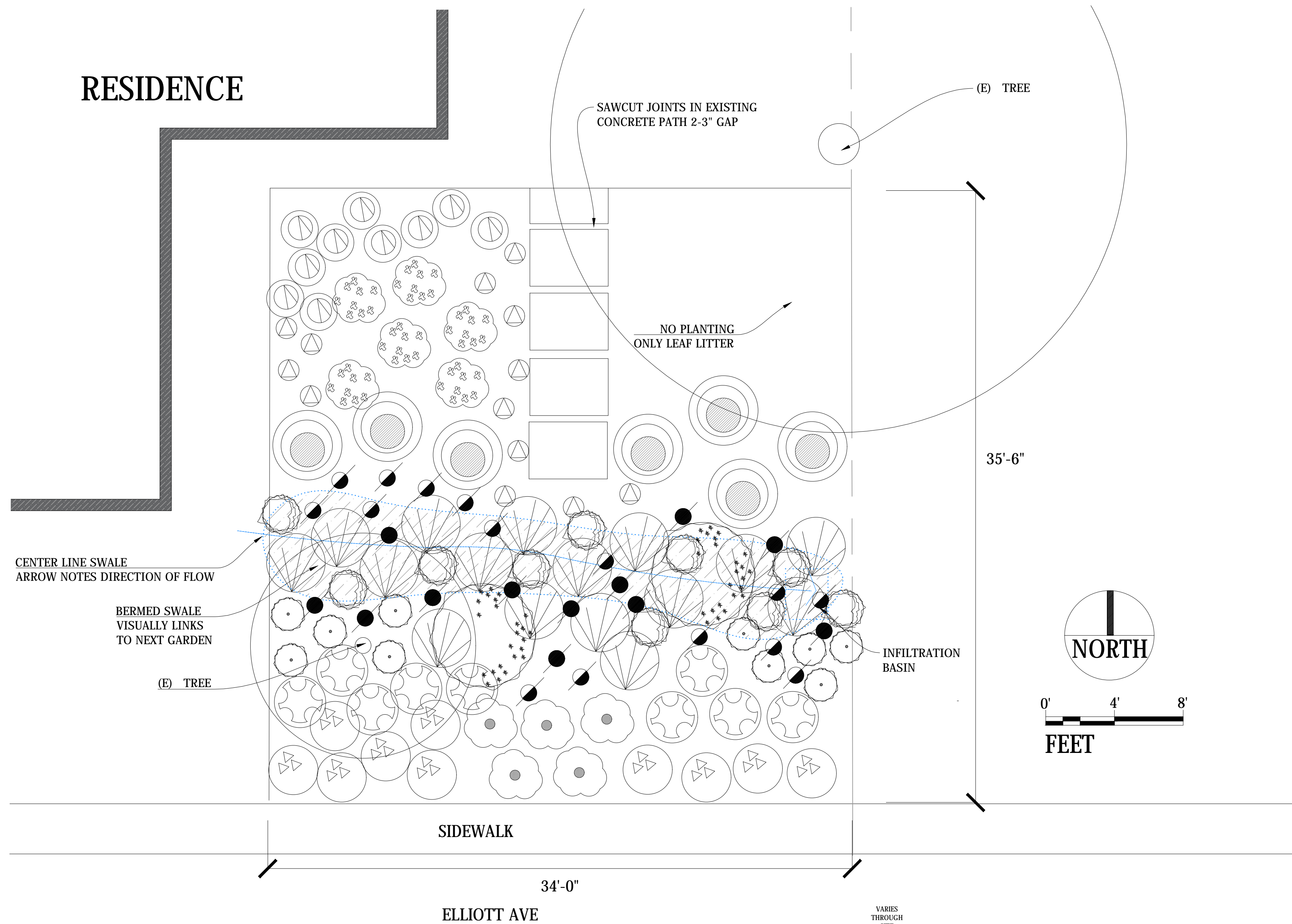


RESIDENCE

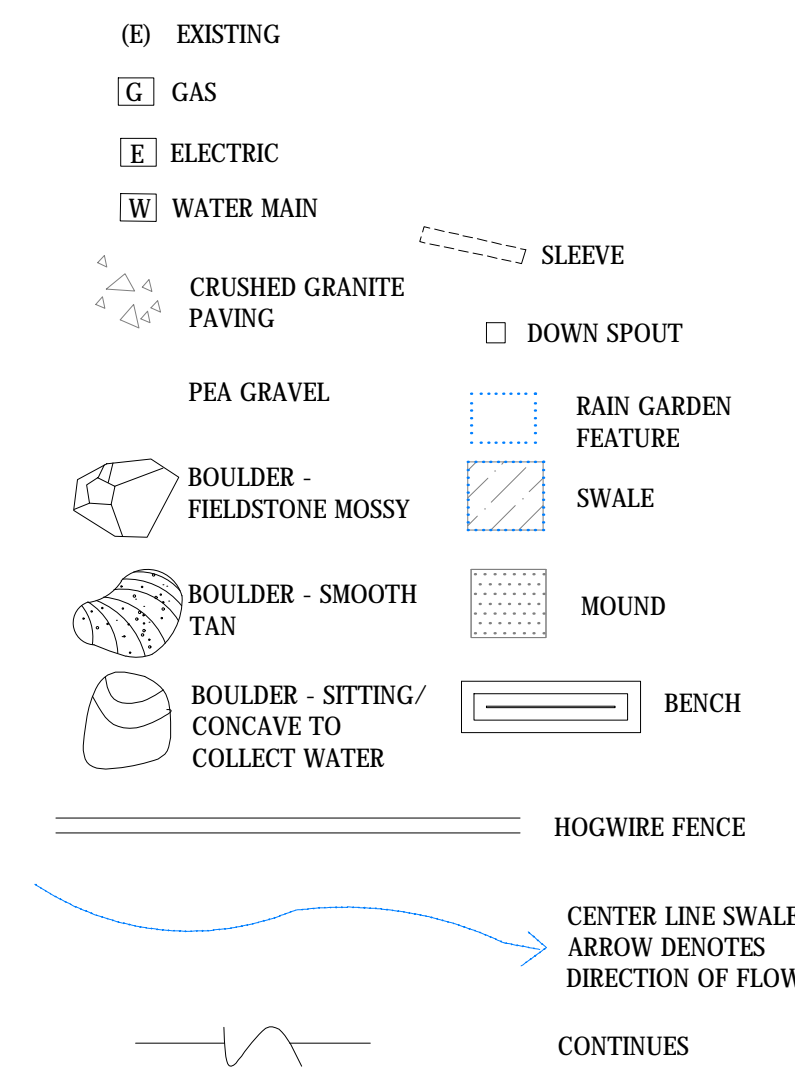


PLANT LEGEND

SYMBOL**	BOTANIC NAME	COMMON NAME	SPACING	SIZE	QTY
●	ASCLEPIAS SPECIOSA	SHOWY MILKWEED	3'	1 GAL	15
●	ASCLEPIAS FASCICULARIS	NARROWLEAF MILKWEED	3'	1 GAL	12
○	CERCIS OCCIDENTALIS	WESTERN REDBUD	10'-18'	1 GAL	2
○	ERIOGONUM WARRINER LYTTLE	GROUNDCOVER BUCKWHEAT	4'	1 GAL	10
○	FRANGULA 'MOUND SAN BRUNO'	COFFEEBERRY	6'	1 GAL	7
○	IRIS DOUGLASIANA	CALIFORNIA IRIS MIXED HYBRIDS	2'	1 GAL	10
○	MONARDELLA VILLOSA	COYOTE MINT	2'	4"	10
○	MUHLENBERGIA RIGENS	DEERGRASS	4'-5'	1 GAL	18
○	ROSA CALIFORNICA	CALIFORNIA ROSE	6'	1 GAL	6
○	SALVIA 'BEE'S BLISS'	BEE'S BLISS SALVIA	5'	1 GAL	9
○	SALVIA SPATHACEA	HUMMINGBIRD SAGE	4'	1 GAL	10
○	SATUREJA DOUGLASII	YERBA BUENA	3'	4"	13

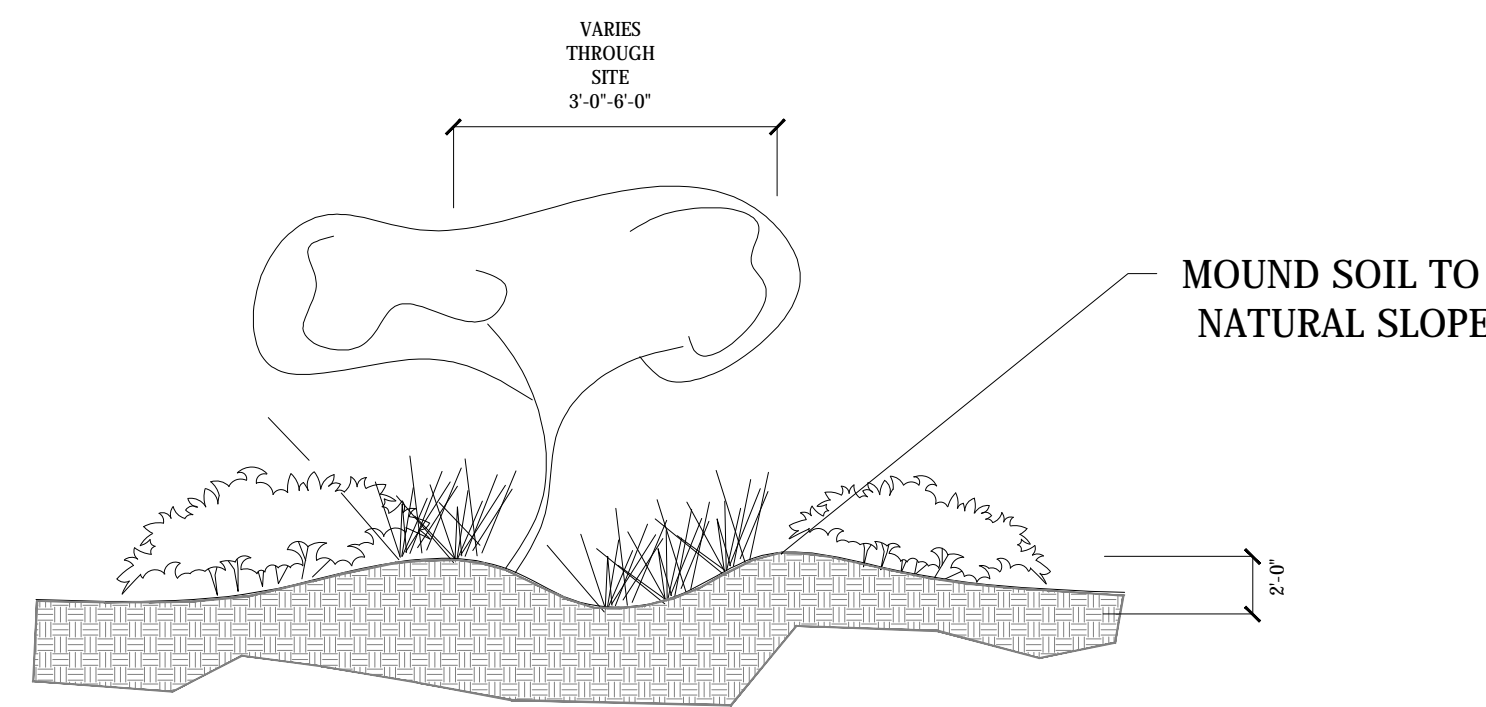
**SYMBOLS IN LEGEND MAY NOT REFLECT SIZE ON PLAN. PLANTING LAYOUT REFLECTS FULL COVERAGE IN 3 YEARS.

GENERAL MATERIALS LEGEND FOR SRJC PROJECT

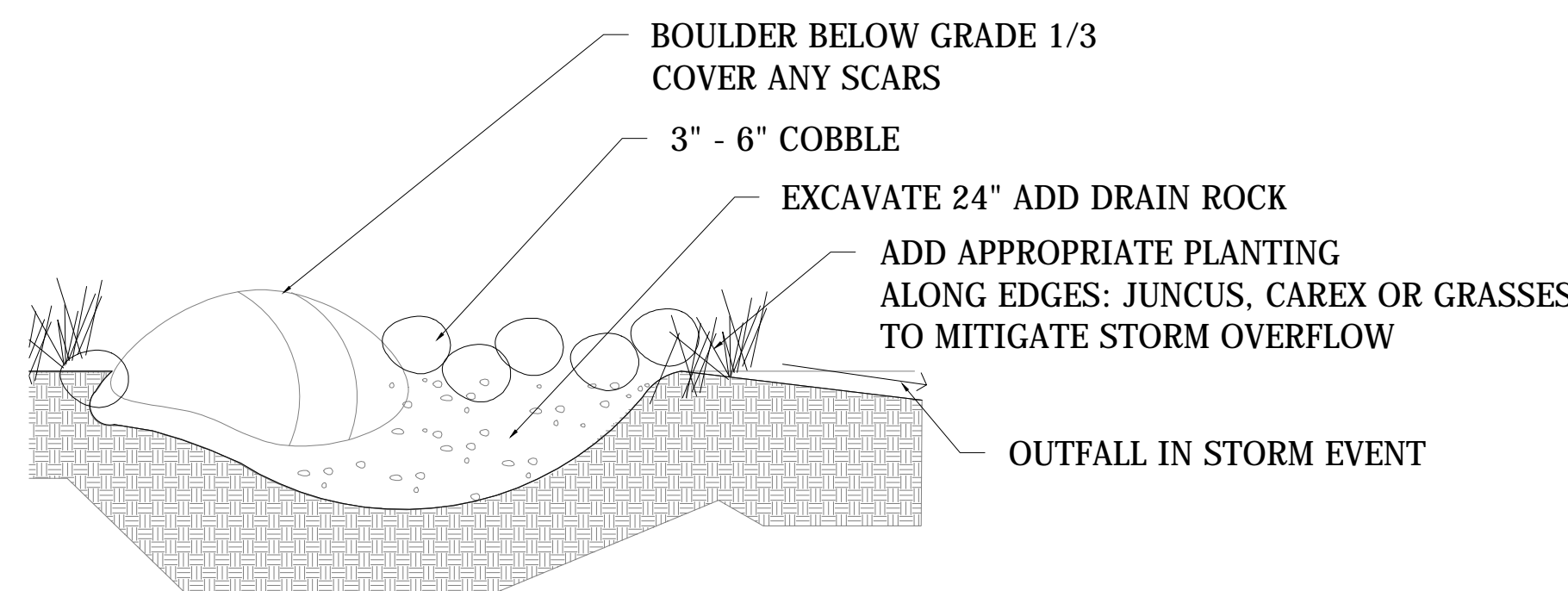


CONSTRUCTION NOTES:

1. MOUNDS SHOULD BE CREATED WITH LEAN TOP SOIL.
2. INFILTRATION BASIN SHOULD BE CREATED WITH 24" MINIMUM DRAIN ROCK - OVER FLOW DIRECTED TO STORM DRAIN/GUTTER.
3. SAWCUT PAVERS WILL BE IRREGULAR IN SIZE. ADD CRUSHED ROCK BETWEEN.
4. OAK ROOTS SHOULD BE PROTECTED - IF DIGGING FOR PLANTING RESULTS IN DAMAGE TO ROOTS MOUND SOIL RATHER THAN DIGGING.
5. PLANT MATERIALS SHOULD BE SELECTED FROM SMALLEST SIZE AVAILABLE TO INSURE BEST HEALTH AND NOT BE ROOT BOUND.
6. MULCH SHOULD NOT BE WITHIN 1' OF RESIDENCE OR BUILDINGS



BERMED SWALE DETAIL NOT TO SCALE



INFILTRATION BASIN DETAIL NOT TO SCALE

SOIL NOTES

SOIL AMENDMENTS, CONDITIONING AND MULCHING.

1. A MINIMUM OF EIGHT (8) INCHES OF NON-MECHANICALLY COMPACTED SOIL SHALL BE AVAILABLE FOR WATER ABSORPTION AND ROOT GROWTH IN PLANTED AREAS.
2. COMPOST OR NATURAL FERTILIZER SHALL BE INCORPORATED INTO THE SOIL TO A MINIMUM DEPTH OF EIGHT (8) INCHES AT A MINIMUM RATE OF SIX (6) CUBIC YARDS PER ONE THOUSAND (1,000) SQUARE FEET, OR ACCORDING TO SPECIFIC AMENDMENT RECOMMENDATIONS FROM A SOILS LABORATORY REPORT.
3. A MINIMUM OF THREE-INCH LAYER OF "ARBOR" MULCH SHALL BE APPLIED ON ALL EXPOSED SOIL SURFACES OF PLANTING AREAS EXCEPT IN TURF AREAS, CREEPING OR ROOTING GROUNDCOVER, OR DIRECT SEEDING APPLICATIONS.
4. FIVE PERCENT (5%) OF THE TOTAL SITE SHOULD BE LEFT UN-MULCHED FOR BURROWING BEE HABITAT.

BY USING THESE PLANS, I AGREE TO DEFEND, INDEMNIFY AND HOLD HARMLESS THE SONOMA MARIN SAVING WATER PARTNERSHIP, ITS MEMBERS SONOMA COUNTY WATER AGENCY, CITY OF SANTA ROSA, MARIN MUNICIPAL WATER DISTRICT, NORTH MARIN WATER DISTRICT, CITY OF ROBINET PARK, CITY OF PLEASANTON, CITY OF COPAULI, CITY OF SONOMA, VALLEY OF THE MOON WATER DISTRICT AND TOWN OF WINDSOR AND THEIR DIRECTORS, OFFICERS, AGENTS, EMPLOYEES AND LANDSCAPE DESIGN CONSULTANTS AGAINST ANY AND ALL LOSS, LIABILITY, EXPENSE, CLAIMS, SUITS AND DAMAGES, INCLUDING ATTORNEY'S FEES, ARISING OUT OF OR RESULTING FROM THE USE OF THIS LANDSCAPE PLAN. I UNDERSTAND THAT IT IS MY RESPONSIBILITY AS THE PROJECT OWNER TO ENSURE THAT PLAN ELEMENTS ARE IMPLEMENTED SAFELY AND ACCORDING TO APPLICABLE STATUTES, RULES, REGULATIONS, ORDINANCES AND/OR CODES. SONOMA MARIN SAVING WATER PARTNERSHIP, ITS MEMBERS AND LANDSCAPE DESIGN CONSULTANTS MAKE NO REPRESENTATIONS AND GRANT NO WARRANTIES, EXPRESS OR IMPLIED, EITHER IN FACT OR BY OPERATION OF LAW, BY STATUTE OR OTHERWISE, AND SONOMA MARIN SAVING WATER PARTNERSHIP, ITS MEMBERS AND DESIGN CONSULTANTS EACH SPECIFICALLY DISCLAIM ANY OTHER WARRANTIES, WHETHER WRITTEN OR ORAL, OR EXPRESS OR IMPLIED, INCLUDING ANY WARRANTY OF QUALITY, MERCHANTABILITY OR FITNESS FOR A PARTICULAR USE OR PURPOSE OR ANY WARRANTY AS TO THE VALIDITY OF ANY PATENTS OR THE NON-INFRINGEMENT OF ANY INTELLECTUAL PROPERTY RIGHTS OF THIRD PARTIES.



SANTA ROSA JUNIOR COLLEGE
 DEMONSTRATION GARDEN PROJECT
 1808 ALBANY DRIVE SIDE
 SANTA ROSA, CA



PLANTING PLAN
 THEME: UNDER
 THE OAKS

DATE
 JUNE, 2018

G-2.0

SHEET 2
 OF 3